

MATERIALI E PRESCRIZIONI

cis magrone C12/15
cis strutture C25/30
acciaio C.A. B450 C
saturazione dei fori armati: resina epossidica bicomponente
a presa entro 15 min.
N.B.: MISURE E QUOTE DA VERIFICARE IN CORSO D'OPERA

N.B.
spille n. 3/mq Ø10

COMUNE DI TERNI
Provincia di Terni

**LAVORI DI ADEGUAMENTO SISMICO DELLA SCUOLA
MATERNA ED ELEMENTARE R. DONATELLI IN TERNI,
VIA VODICE N.23 – BLOCCO AULE -
CUP: F48E180090001; CIG: 7724133C7**

PROGETTO ESECUTIVO

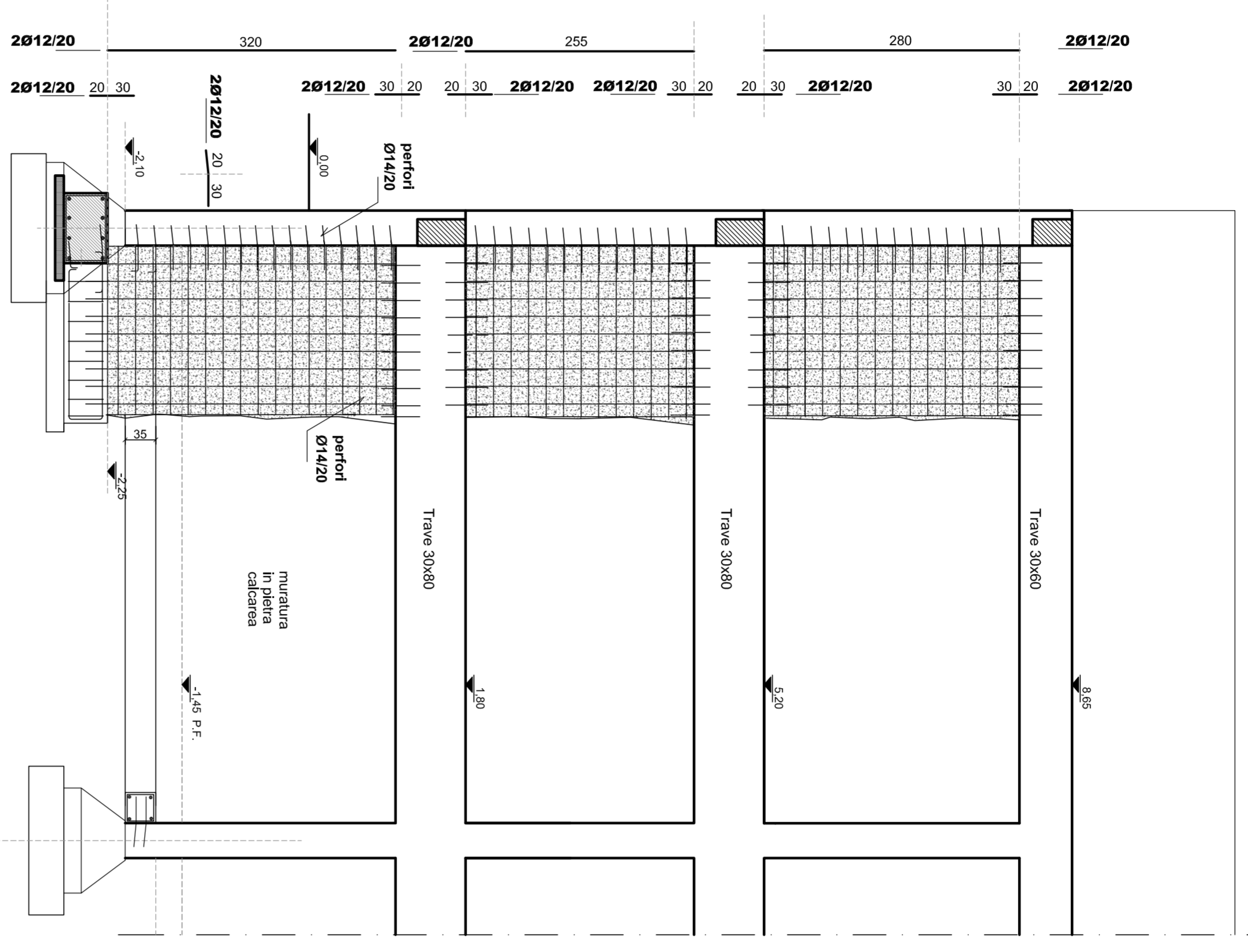


4.2 Elaborato grafico prog. strutturale
di adeguamento: planimetria e dettagli

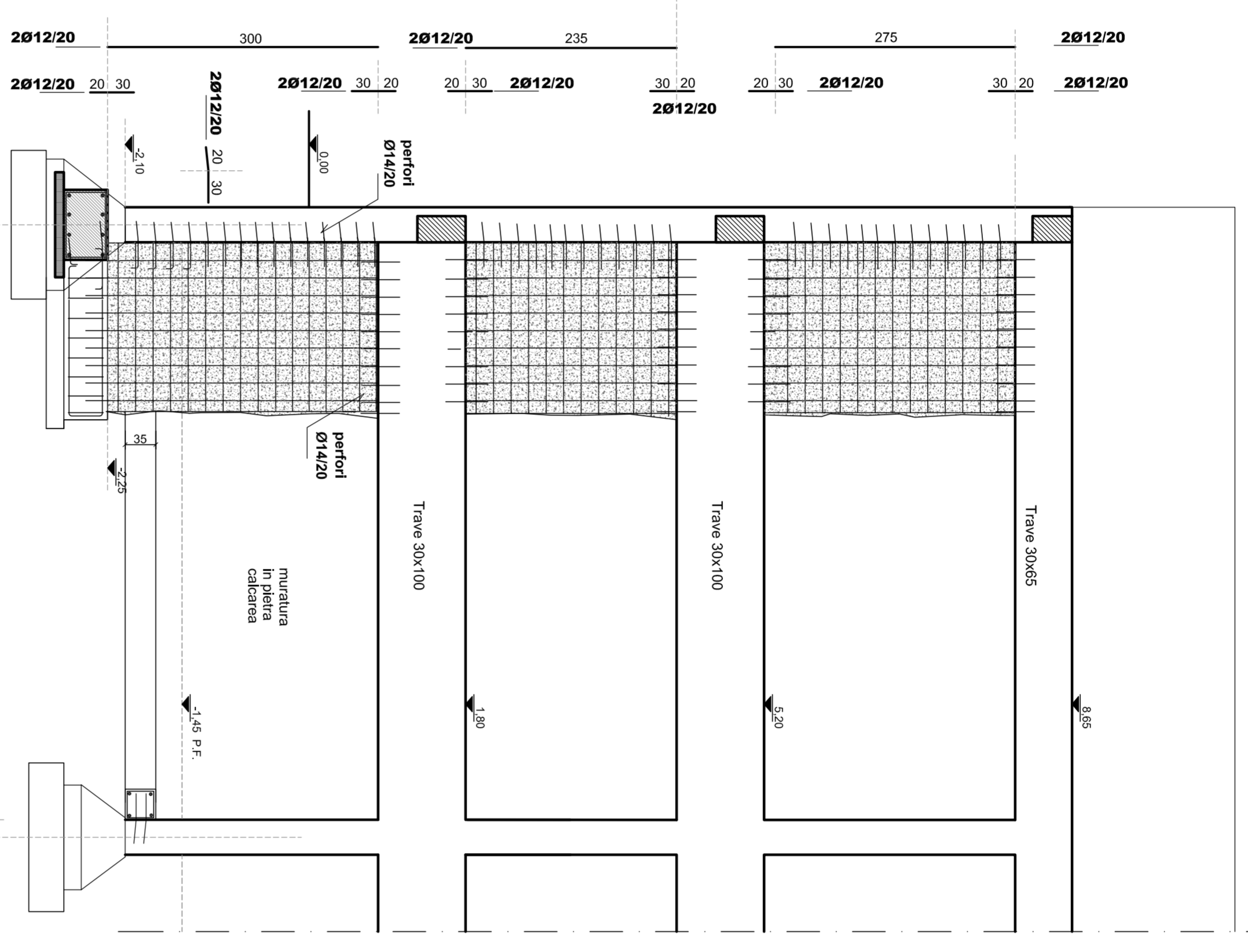
PROGETTISTI R.T.P.:
- Ing. Elio Procesi - INTERSTUDIO - CIVIGLIANO
- Ing. Edoardo Usaldi
- Arch. Marco Romanello
- Geol. Don. Claudio Ferruti
RIP Geom. Stefano Predieri

Settembre 2019

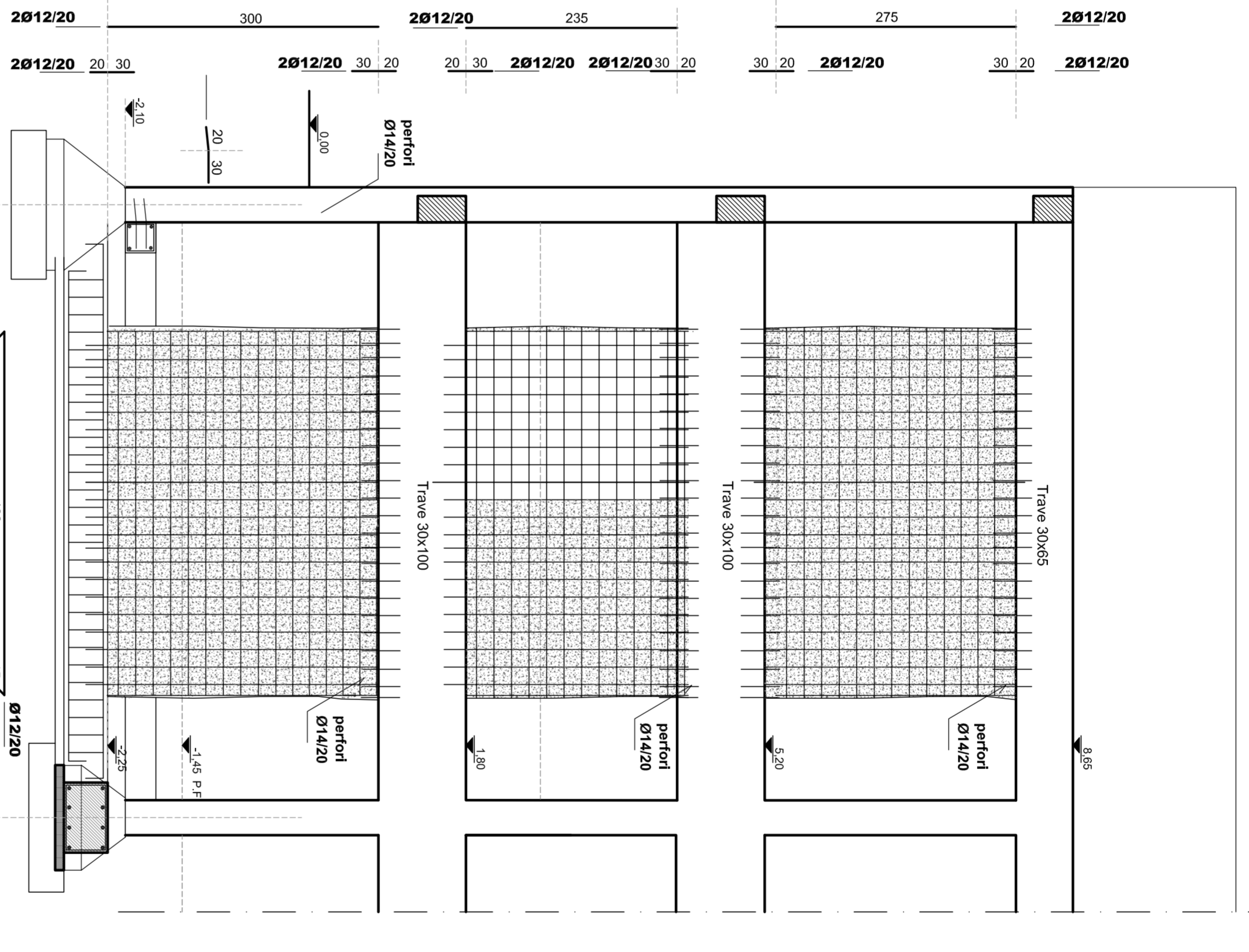
PARETE TIPO a
(Scala 1:50)



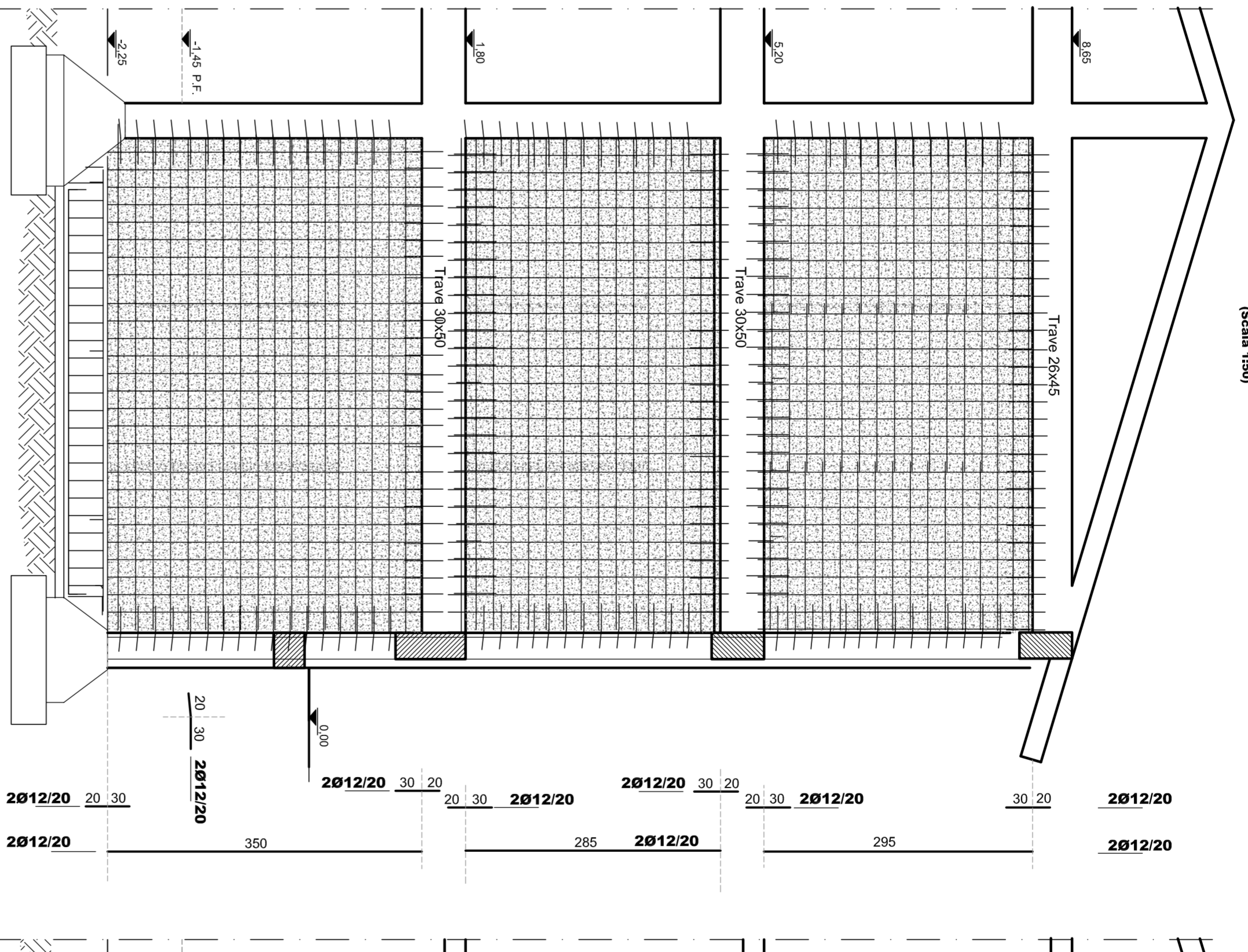
PARETE TIPO b
(Scala 1:50)



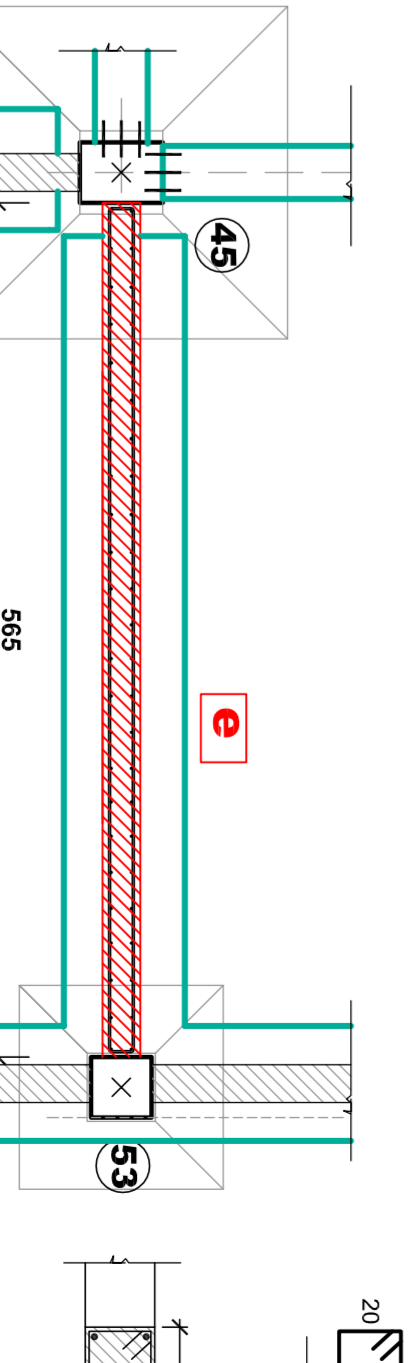
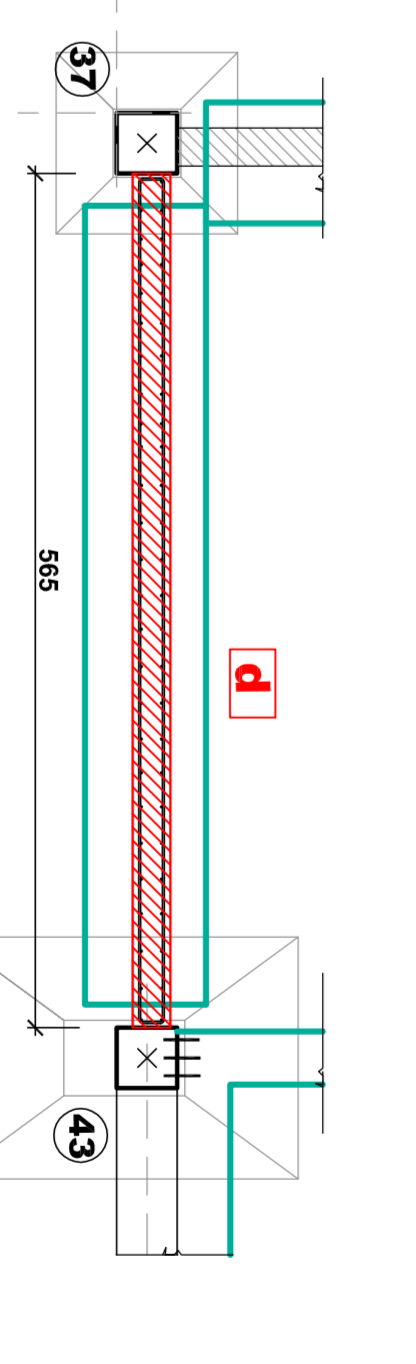
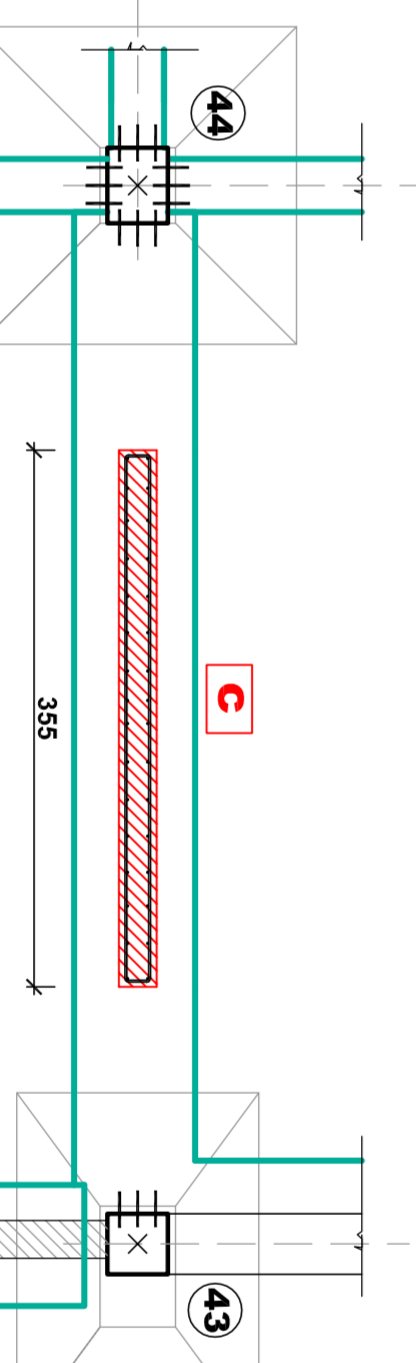
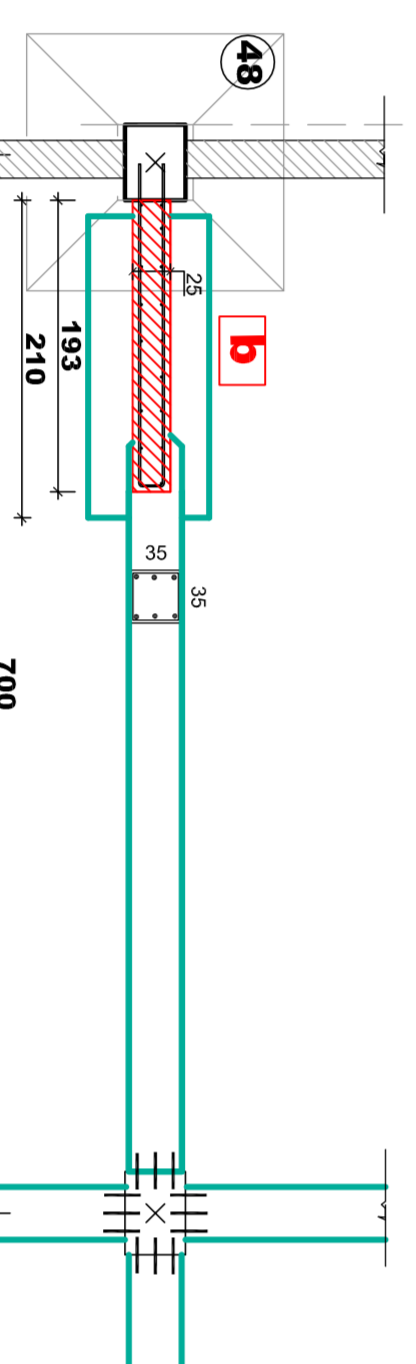
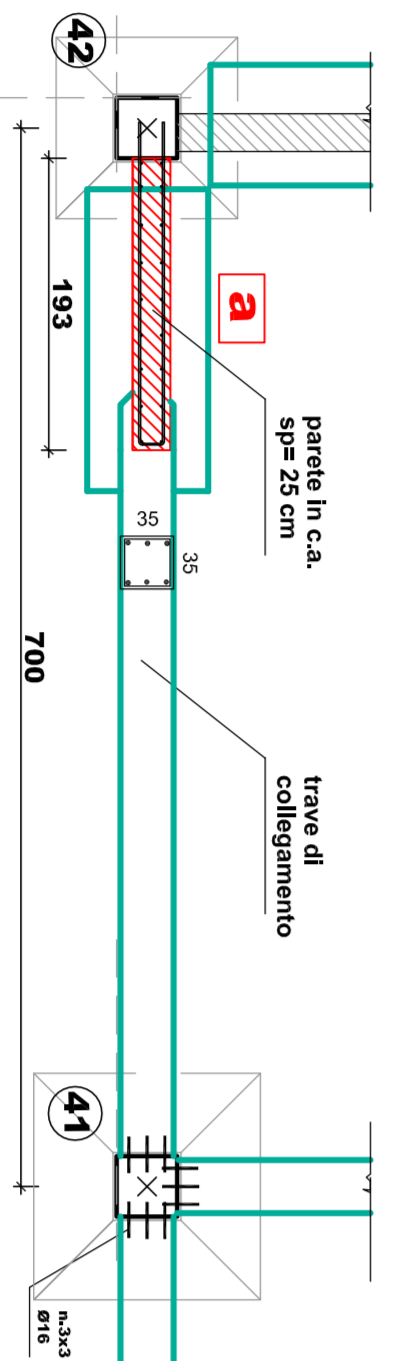
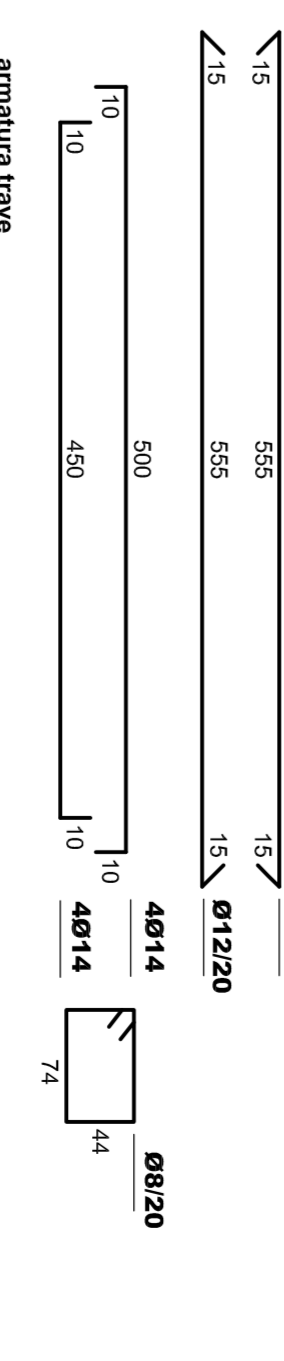
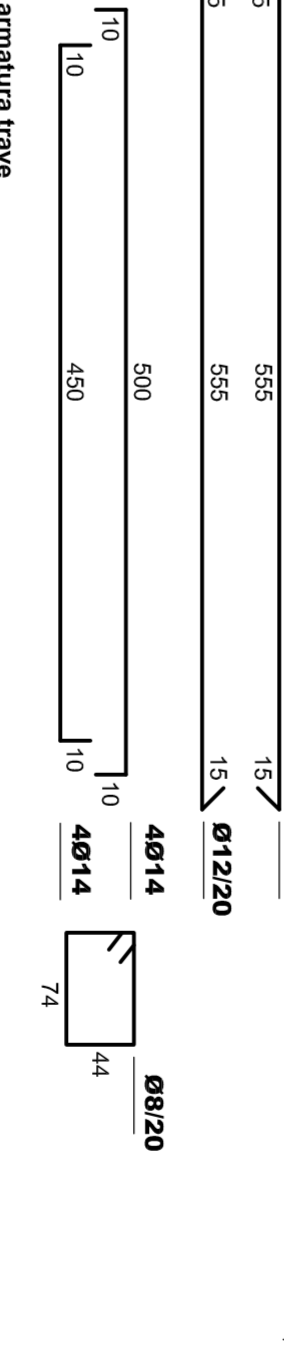
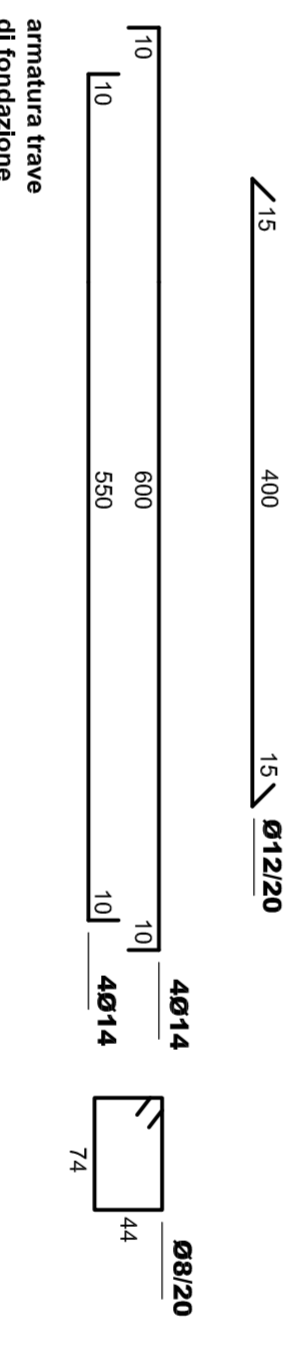
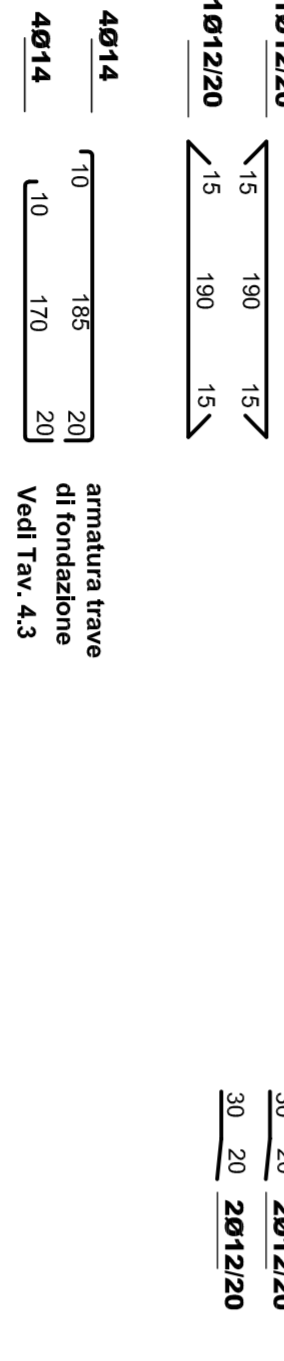
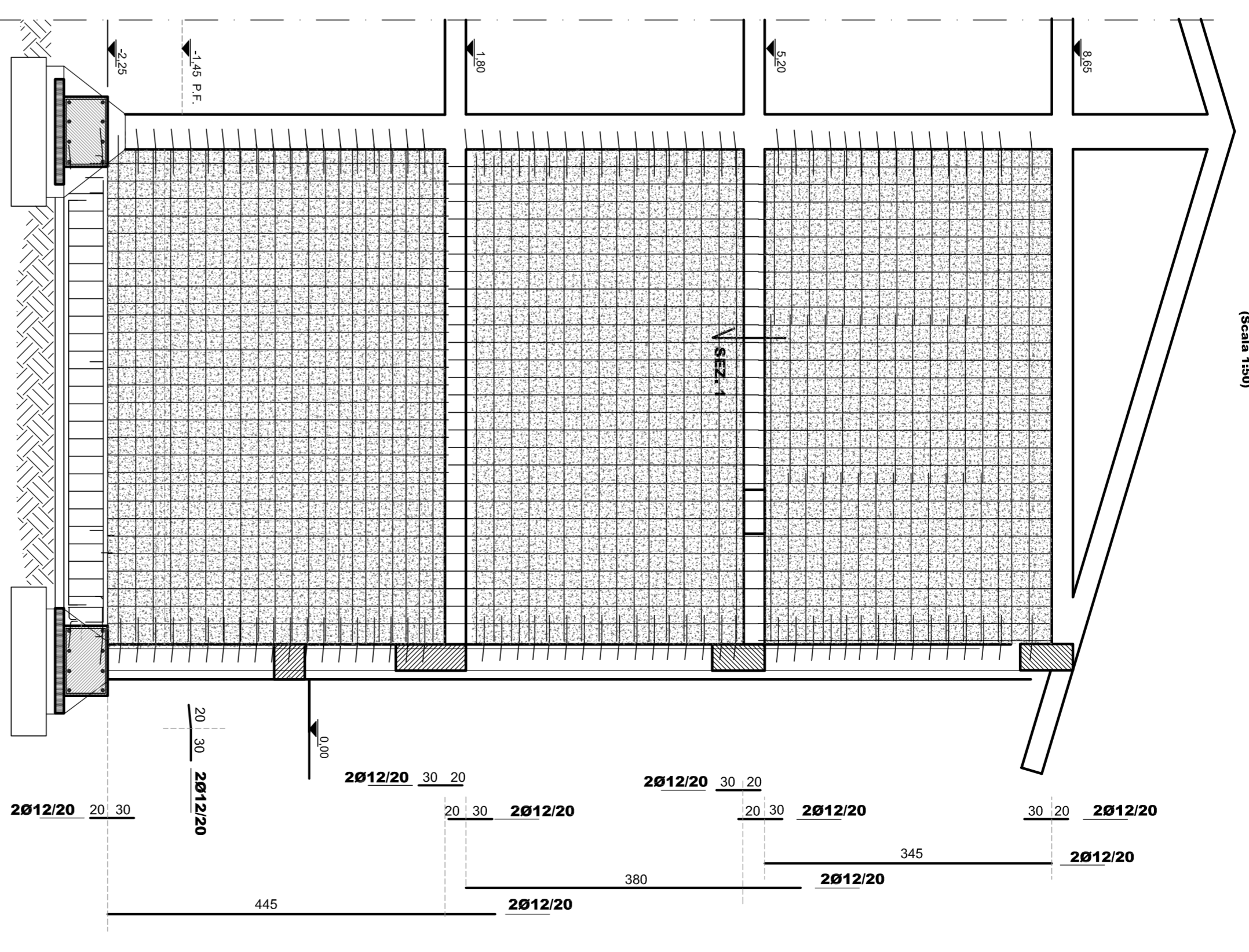
PARETE TIPO c
(Scala 1:50)



PARETE TIPO d
(Scala 1:50)



PARETE TIPO e
(Scala 1:50)



SEZ. 1